

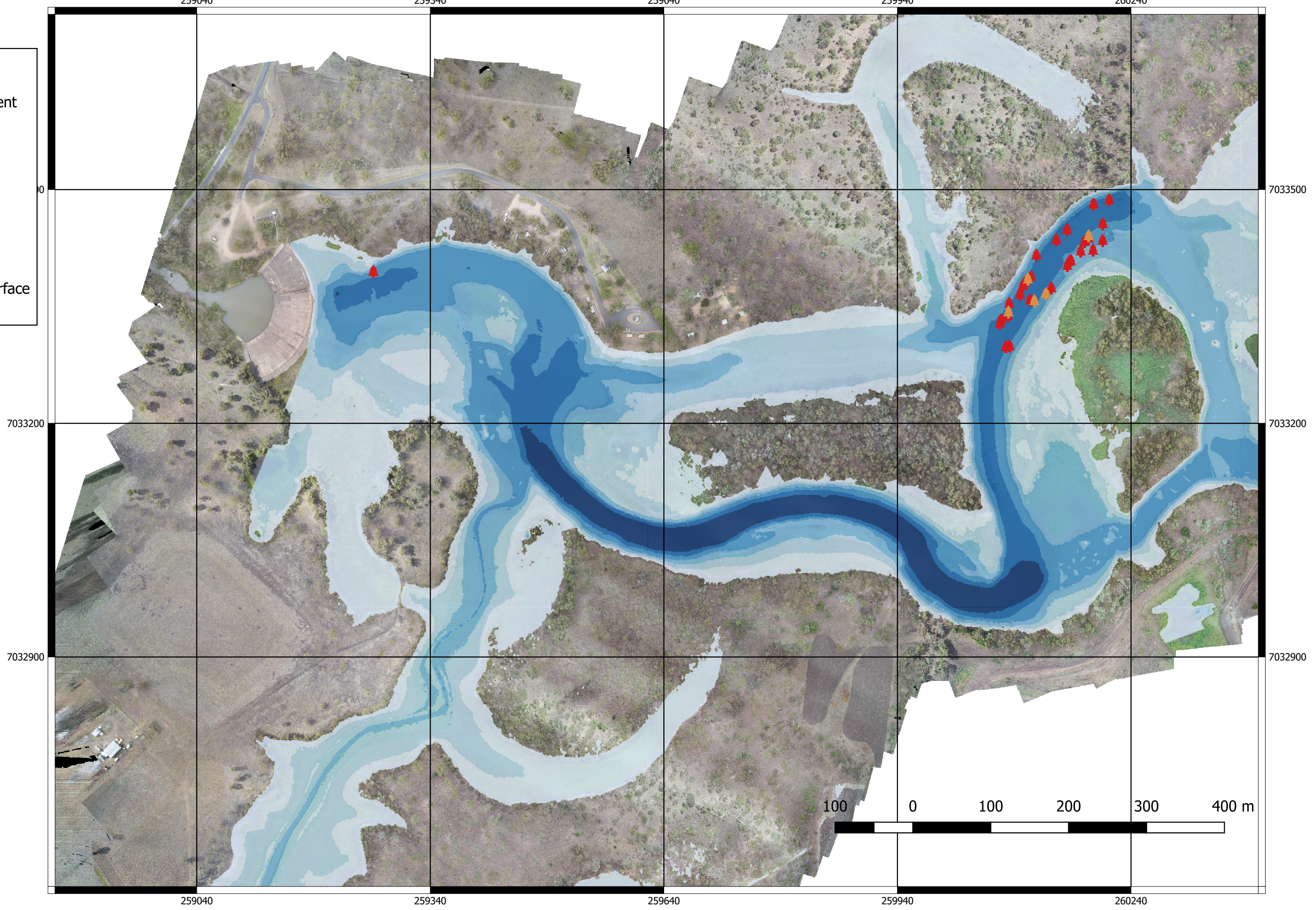
Legend:


Weir Depth 100 percent

- 0-1m
- 1-2m
- 2-3m
- 3-4m
- 4-5m
- 5-6m

Hazards

- Within 1m of Surface
- always_visible



SHEET IDENTIFICATION VA-400209-D01 SHEET 1 of 4	Chinchilla Weir Safe Boating Zones	Veris Australia 120 Forster Street Invermay, 7248	Crew: N.Green & B.Ritchie Vessel: USV & DJI Phantom System: Kongsberg GeoSwath Datum: MGA94-Zone56 Base STA: SmartNet Vertical: AHD	Scale: 1:4000	Date of Survey: November 2018	This survey has been carried out using a multibeam survey system to I.H.I S44 Standards for Special Order Surveys and that: (A) A 0.25m grid has been achieved over the survey area (B) A Depth uncertainty of +/- 0.150m for reduced depths (C) Data processing and modelling has been carried out using a 1.0m grid (D) Horizontal position has an uncertainty of +/- 0.5m	
	Full Supply AHD 295.75m	I.H.O S44 Standards Special Order Survey	Field Books: NG01	Sorted Filename: Chinchilla_no_veg.laz			