

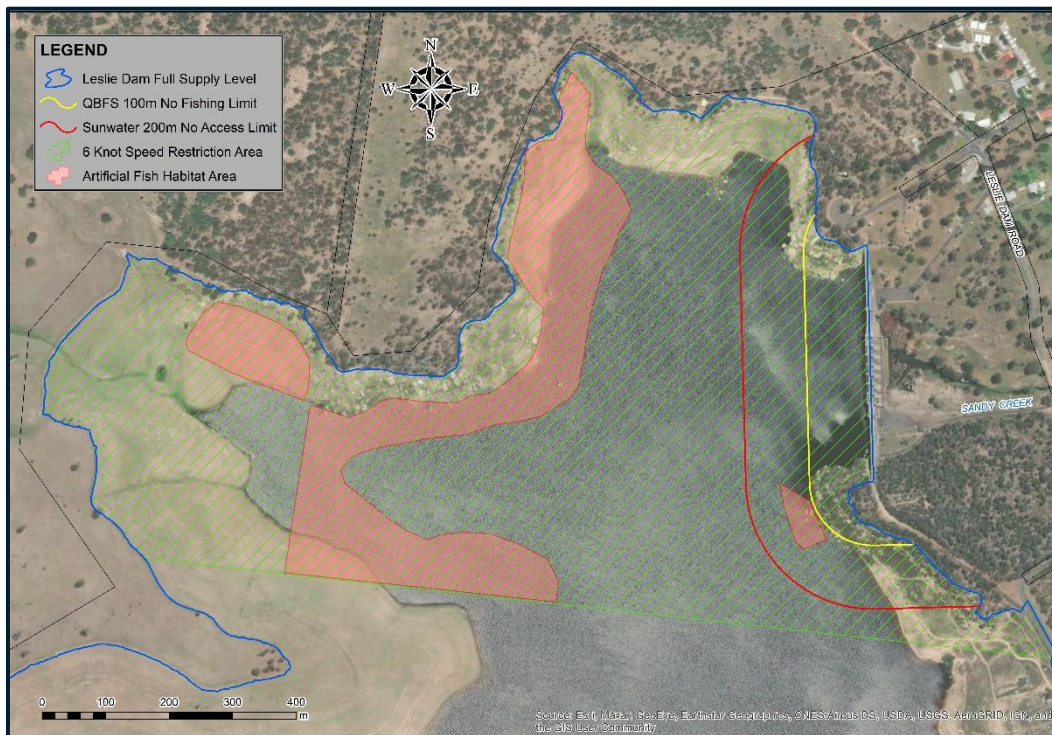
NOTICE: UNDERWATER HAZARDS

Leslie Dam has numerous underwater and above water hazards present at various storage levels. Please take note of the following safety precautions in relation to the below map of Leslie Dam.

- No fishing, water activities or access is permitted between the red line and the dam wall
- Underwater and on land objects including rocks, tree stumps, flood margin lease fences, and artificial fish habitat may be present throughout the storage
- In addition to these hazards, artificial fish habitat is present within the red-shaded area
- Watercraft must not exceed 6 knots within the green-shaded area.

This is a historical hazards map and **DOES NOT** identify every current hazard. The location, type and depth of hazards change over time due to general water movements, flood events and other natural occurrences.

This information is provided for users' knowledge and reference only. Users bear the risk in undertaking recreational activities on this storage and must take appropriate measures to assess conditions at all times. Always exercise caution, assess conditions and read the signs. Visit sunwater.com.au for further information around staying safe on the water.



Disclaimer: Sunwater makes no statement, representation, or warranties about the accuracy or completeness of — and users should not rely on — any information provided by Sunwater above, or generally in relation to conditions at a Sunwater storage (Information). Sunwater disclaims all responsibility and all liability (including, without limitation, liability in negligence) for all expenses, losses, damages and costs a user might incur as a result of use of such Information, and any Information being inaccurate or incomplete in any way, and for any reason. Users accept sole responsibility and the risk associated with any use of Information, irrespective of the purpose to which such use or results are applied.