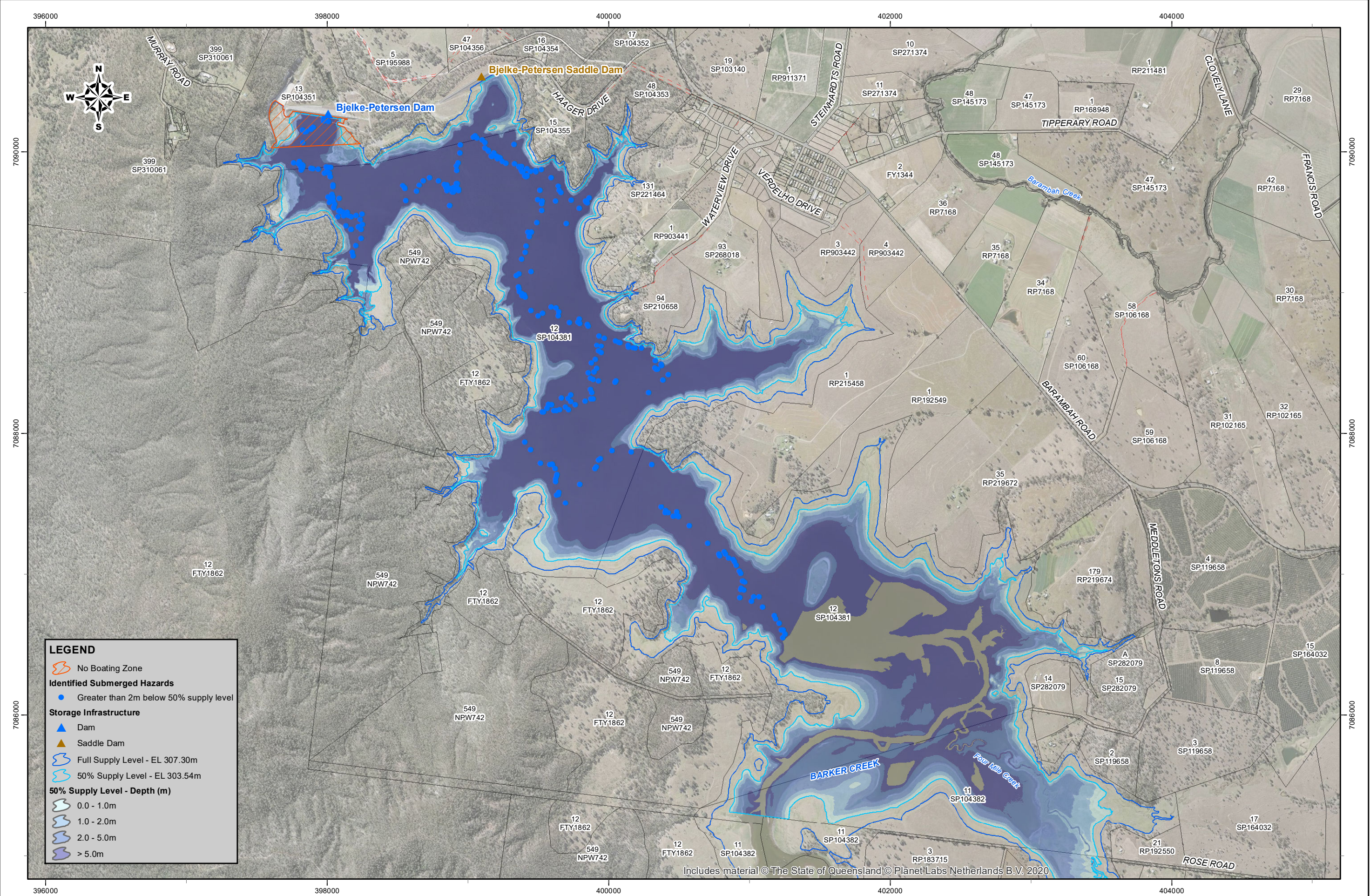


While every care is taken to ensure the accuracy of this product, SunWater makes no representations or warranties about its accuracy, reliability, completeness or suitability for any particular purpose and disclaims all responsibility and all liability (including without limitation, liability in negligence) for all expenses, losses, damages (including indirect or consequential damage) and costs which you might incur as a result of the product being inaccurate or incomplete in any way and for any reason.

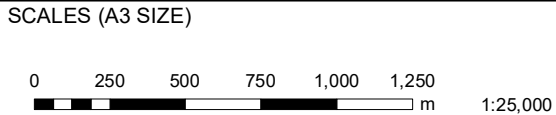
Document: S:\BW_WaterResources\projects\SW_Barker Barambah WSSIN-WBRR-04-01-01-EM 21BBA04 BLP Dam Hydrographic Survey\Drawings\AcMap\256329-A.mxd
Printed: Wednesday, 05/10/2022 08:50:42 AM

MAP PRODUCED BY:
SUNWATER LTD
TEL: (07) 3120 0000



REVISION	DATE	BY	APP'D	REMARKS	CKD	PSD
	05/10/22	A		ISSUED FOR USE	PM	DL

MAP INFORMATION
Projected Coordinate System: Mapping Grid of Australia (MGA2020), Zone 56.



DRAWN	DESIGNED
CHECKED	CHECKED
APPROVED	

sunwater

©SUNWATER LIMITED
ACN 131 034 985

**BJELKE PETERSEN DAM
SUBMERGED HAZARDS
50% OF FULL SUPPLY LEVEL
EL 303.54m AHD**

CONTRACT NUMBER	
DRAWING NUMBER	REV.
256329	A
SHEET 1 OF 1	
DATE AUGUST 2022	