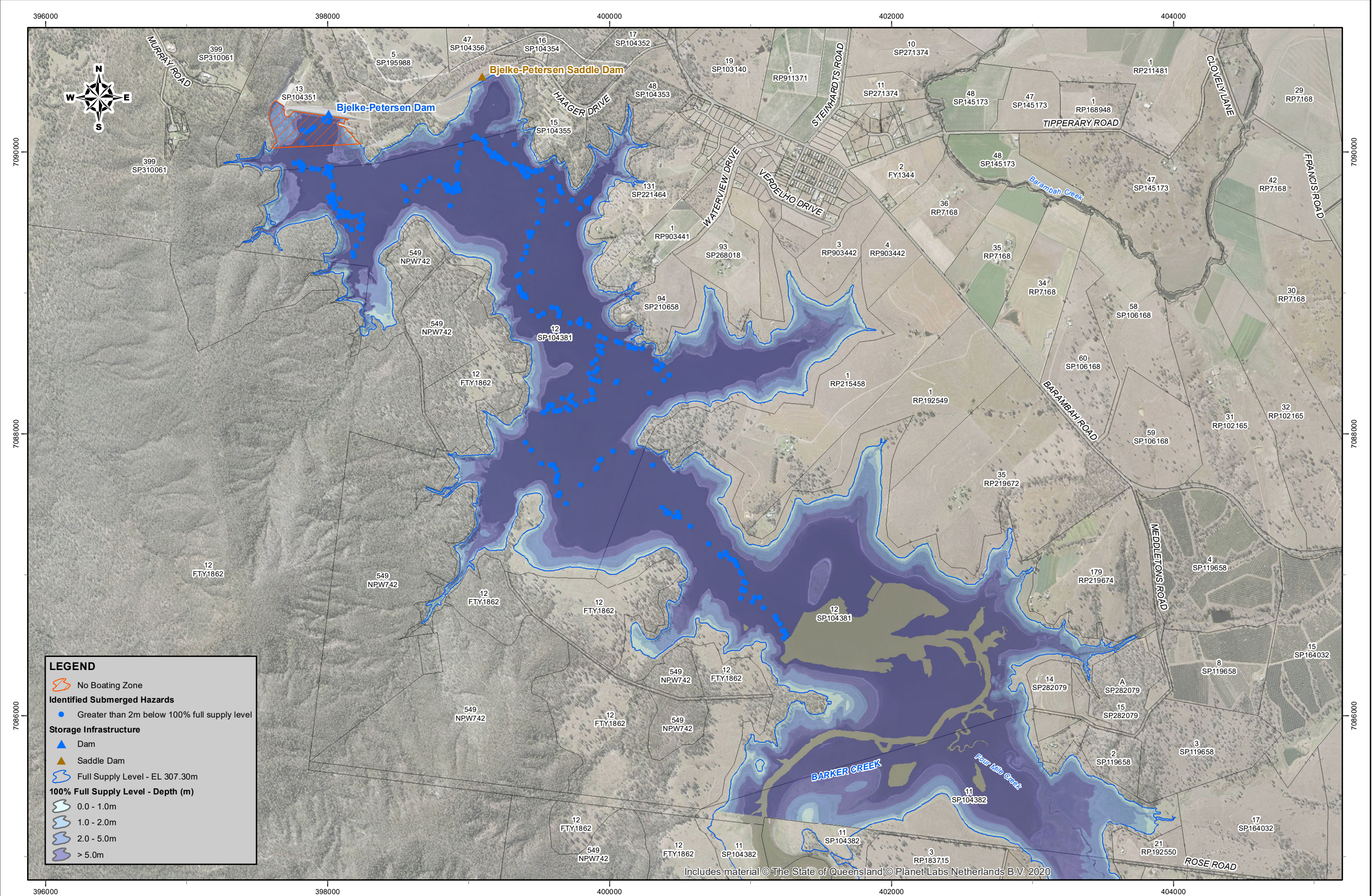


While every care is taken to ensure the accuracy of this product, SunWater makes no representations or warranties about its accuracy, reliability, completeness or suitability for any particular purpose and disclaims all responsibility and all liability (including without limitation, liability in negligence) for all expenses, losses, damages (including indirect or consequential damage) and costs which you might incur as a result of the product being inaccurate or incomplete in any way and for any reason.

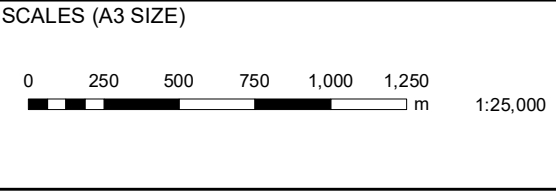
Document: S:\BW_WaterResources\projects\SW_Barker Barambah WSSIN-WBRR-04-01-01-EM 21BBA04 BLP Dam Hydrographic Survey\Drawings\AcMap\256327-A.mxd
Printed: Wednesday, 05/10/2022 08:45:05 AM

MAP PRODUCED BY:
SUNWATER LTD
TEL: (07) 3120 0000



REVISION					
05/10/22	A	ISSUED FOR USE		PM	DL
DATE		REMARKS		CKD	PSD

MAP INFORMATION
Projected Coordinate System: Mapping Grid of Australia (MGA2020), Zone 56.



DRAWN	DESIGNED
IDH	
CHECKED	CHECKED
	PM
APPROVED	
D. LARGE	
5/10/2022	

sunwater

©SUNWATER LIMITED
ACN 131 034 985

BJELKE PETERSEN DAM SUBMERGED HAZARDS 100% OF FULL SUPPLY LEVEL EL 307.30m AHD		CONTRACT NUMBER	
DRAWING NUMBER	REV.		
256327	A		
SHEET 1 OF 1			
DATE		AUGUST 2022	