

BLUE'S WATER SAFETY QUIZ

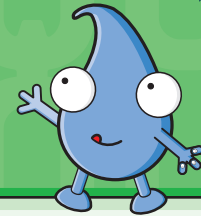
Read Blue's water safety posters then see if you can get all the quiz answers correct!



1.

Q: What is a weir?

- (a) A type of swimming pool
- (b) A big wall that holds back the river water
- (c) A bridge for cars to drive over the river



2.

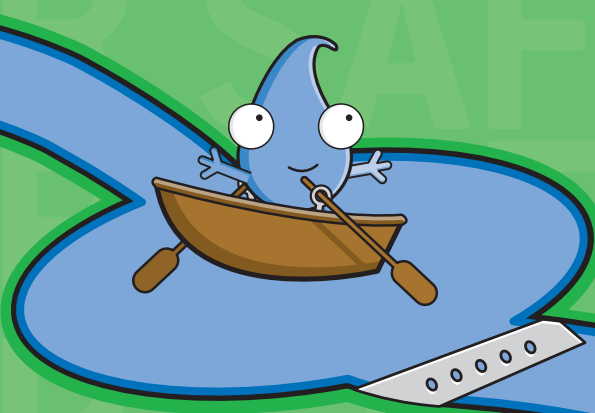
Q: Why is fast flowing water from a weir dangerous?

- (a) It hides rocks, holes and fallen trees which you could get stuck in
- (b) It moves very fast
- (c) All of the above

4.

Q: Why should you stay away from water channels?

- (a) You could become trapped in deep water which is dangerous
- (b) The water is not clean and could make you very sick
- (c) All of the above



3.

Q: What should you NOT do if you want to go for a swim at a dam?

- (a) Swim anywhere you like
- (b) Look around and swim where the signs say its safe
- (c) Stay away from the dam walls



5.

Q: Which of the following is true about water channels?

- (a) They are made of sand
- (b) They are very slippery
- (c) The gates let the water in and out quickly
- (d) Both (b) and (c)

Name:

School:

