



SCHEME REPORT – 28 JANUARY 2009

Burdekin Haughton Water Supply Scheme

Managers Report

January 2009



SCHEME REPORT – 28 JANUARY 2009

1. Water Availability and Storage Position

120016 - Burdekin River at Burdekin Falls Dam. ^= Uncorrected telemetry data

Capacity 146.9^%

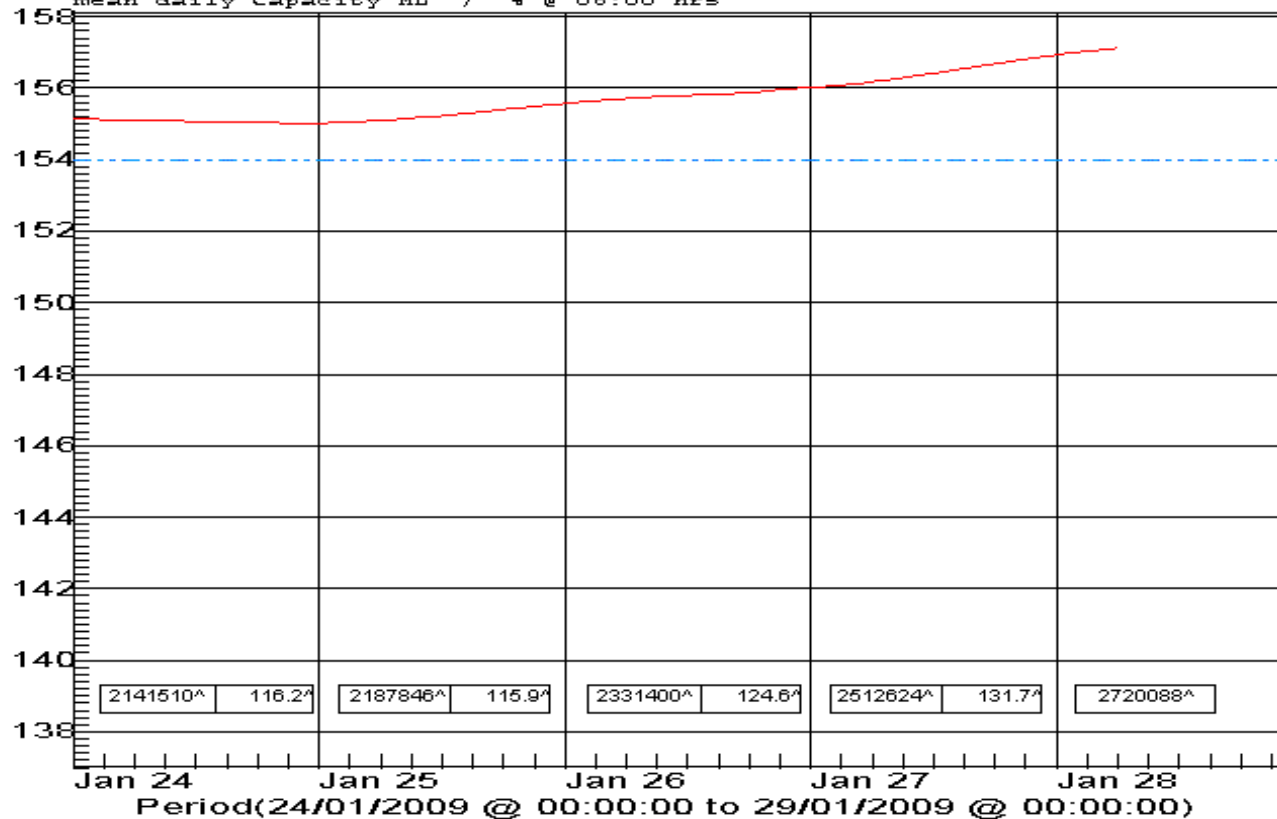
24 hour change 15.2^% : 281639^ML

Full Supply to water level 3.1^m

Full Supply - Level 154.0m AHD ; Capacity 1860000ML

Gauge Height (m)

mean daily Capacity ML / % @ 06:00 hrs



Plot created 28/01/2009 @ 09:12
 Last Poll 28/01/2009 @ 06:28:4
 Status 1=online; 0=off line 1

Date @ Time	GHT(m)	Flow (ML/day)
26/01/2009 @ 02:00:00	155.61^	163980.^
26/01/2009 @ 06:00:00	155.71^	179286.^
26/01/2009 @ 10:00:00	155.78^	190038.^
26/01/2009 @ 14:00:00	155.82^	197275.^
26/01/2009 @ 18:00:00	155.88^	207878.^
26/01/2009 @ 22:00:00	155.98^	225398.^
27/01/2009 @ 02:00:00	156.06^	240429.^
27/01/2009 @ 06:00:00	156.18^	264012.^
27/01/2009 @ 10:00:00	156.33^	294715.^
27/01/2009 @ 14:00:00	156.50^	331096.^
27/01/2009 @ 18:00:00	156.68^	371420.^
27/01/2009 @ 20:00:00	156.77^	392266.^
27/01/2009 @ 22:00:00	156.85^	411171.^
28/01/2009 @ 00:00:00	156.93^	430419.^
28/01/2009 @ 02:00:00	157.00^	447480.^
28/01/2009 @ 03:00:00	157.03^	454525.^
28/01/2009 @ 04:00:00	157.06^	461538.^
28/01/2009 @ 05:00:00	157.09^	468588.^
28/01/2009 @ 06:00:00	157.12^	475677.^



SCHEME REPORT – 28 JANUARY 2009

120012 - Burdekin R at Clare Weir HW. ^= Uncorrected telemetry data

Capacity 162.8^ %

24 hour change 33.6% ; 5211^ ML

Full Supply to water level 1.63^m

Plot created 28/01/2009 @ 09:12

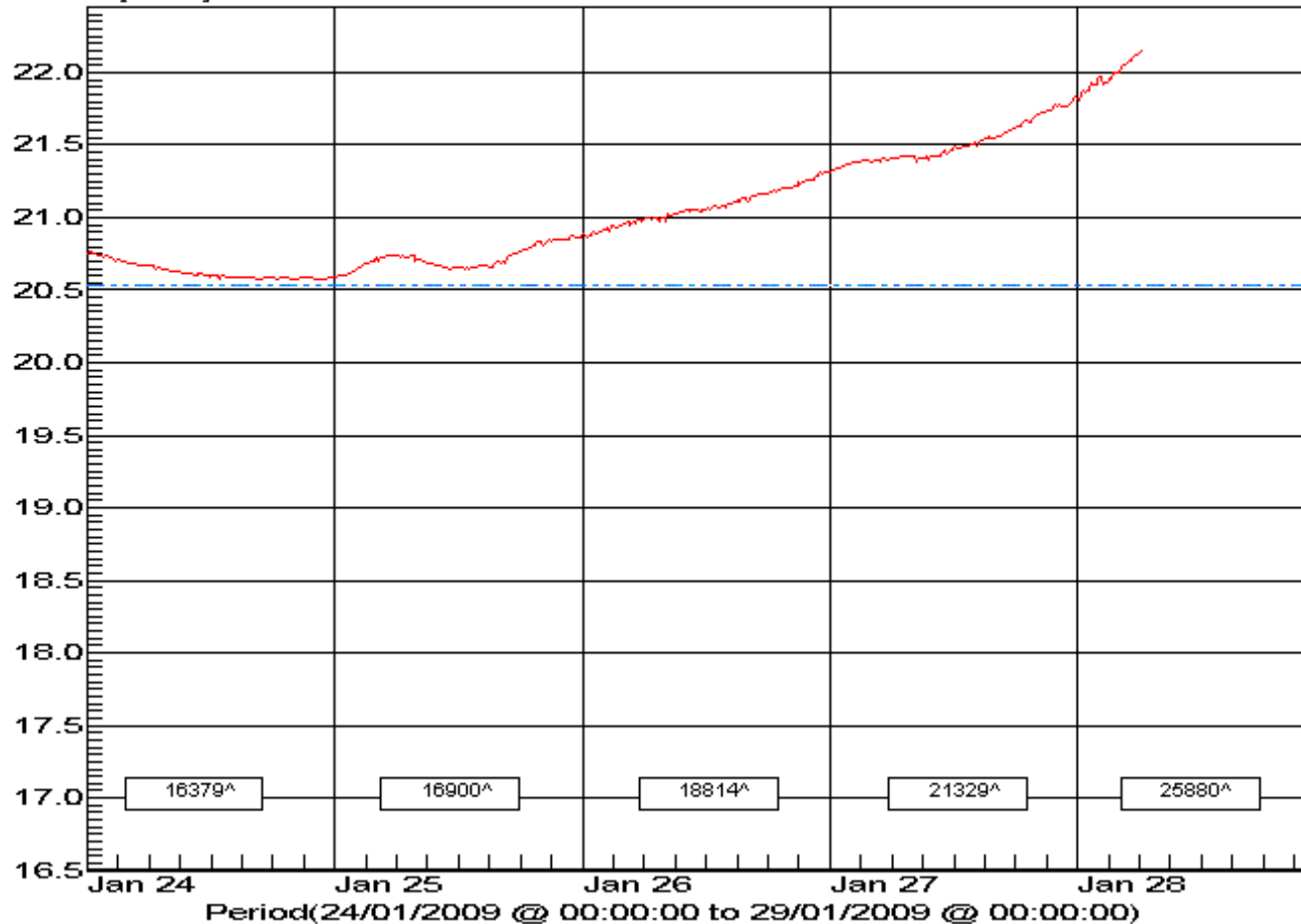
Last Poll 28/01/2009 @ 06:25:21

Status 1=online; 0=off line 1

Full Supply - Level 20.54m AHD ; Capacity 15900ML

Gauge Height (m)

Capacity ML



Date	@ Time	GHT(m)	Capacity ML
26/01/2009	@ 02:00:00	20.91^	17941.5^
26/01/2009	@ 06:00:00	20.98^	18319.9^
26/01/2009	@ 10:00:00	21.04^	18643.5^
26/01/2009	@ 14:00:00	21.08^	18870.6^
26/01/2009	@ 18:00:00	21.17^	19305.4^
26/01/2009	@ 22:00:00	21.26^	19842.9^
27/01/2009	@ 02:00:00	21.37^	20453.9^
27/01/2009	@ 06:00:00	21.41^	20654.5^
27/01/2009	@ 10:00:00	21.43^	20766.5^
27/01/2009	@ 14:00:00	21.52^	21340.6^
27/01/2009	@ 18:00:00	21.62^	21933.2^
27/01/2009	@ 20:00:00	21.70^	22483.1^
27/01/2009	@ 22:00:00	21.76^	22905.5^
28/01/2009	@ 00:00:00	21.83^	23357.2^
28/01/2009	@ 02:00:00	21.94^	24167.6^
28/01/2009	@ 03:00:00	21.94^	24196.9^
28/01/2009	@ 04:00:00	22.00^	24572.8^
28/01/2009	@ 05:00:00	22.08^	25177.5^
28/01/2009	@ 06:20:00	22.17^	25880.3^



SCHEME REPORT – 28 JANUARY 2009

I. Announced Allocation

Announcements for Burdekin Haughton - 01 Jul 2008 to 30 Jun 2009				
Effective Date	Priority	Rate (%)	ROL System	ROL Zone
01 Jul 2008	High	<u>100</u>	Burdekin Haughton	Burdekin Falls Dam & Burdekin River
01 Jul 2008	High	<u>100</u>	Burdekin Haughton	Burdekin River 58km - 50.3km
01 Jul 2008	High	<u>100</u>	Burdekin Haughton	Burdekin River 64km - 58km
01 Jul 2008	High	<u>100</u>	Burdekin Haughton	Burdekin River 90km - 64km
01 Jul 2008	High	<u>100</u>	Burdekin Haughton	D/S of Clare Weir
01 Jul 2008	High	<u>100</u>	Burdekin Haughton	Haughton River Regulated Section
01 Jul 2008	Medium	<u>100</u>	Burdekin Haughton	Burdekin Falls Dam & Burdekin River
01 Jul 2008	Medium	<u>100</u>	Burdekin Haughton	Burdekin River 58km - 50.3km
01 Jul 2008	Medium	<u>100</u>	Burdekin Haughton	Burdekin River 64km - 58km
01 Jul 2008	Medium	<u>100</u>	Burdekin Haughton	Burdekin River 90km - 64km
01 Jul 2008	Medium	<u>100</u>	Burdekin Haughton	D/S of Clare Weir
01 Jul 2008	Medium	<u>100</u>	Burdekin Haughton	Haughton River Regulated Section

II. Water Deliveries

Water Transaction Summary for Burdekin Haughton Scheme - Water Year to Date		Volume (ML)
Announced Allocations		1,110,747.800
Allocation Water Transactions		28,961.354
Total Water Allocations		1,139,709.154
Allocation Water Usage		249,170.595
Remaining Allocation Water		877,671.019

* Includes all water allocations, including those held by irrigators, town, industry and SunWater

* Water usage up to date as of last meter reading (31 December 2008)



SCHEME REPORT – 28 JANUARY 2009

Summary of Transfers - Water Year to Date

Summary of Transfers - Water Year To Date

Water

Number of Transfers 11

Volume of Transfers 2,476.278 ML

*The above figures reflect the Transfers received by SunWater for the Water Year to date.

III. Other Water Management Issues

Water Harvesting

- Burdekin River – commenced 6 January 2009; still available to date.
- Haughton River – commenced 15 January 2009; still available to date.

IV. BFD Spill Event

- Burdekin Falls Dam commenced a spill event on Monday, 5 January 2009.
- Burdekin Falls Dam storage level is currently at 157.15m AHD (spilling at 3.15m) as of 0800 hours 28 January 2009 and is currently discharging around 450,000 ML/d.



SCHEME REPORT – 28 JANUARY 2009

2. Assets and Refurbishments

I. Current Works

R & E Jobs in progress during January 2009

- Replace Pump 1 at Millaroo Relift Pump Station – New pump has arrived; installation work currently in progress.
- Refurbish Pump 1 at Clare A Pump Station – Pump removed and currently at ITT Flygt for refurbishment.
- Dalbeg B Pump Station – Vacuum priming system upgrade.
- Burdekin Falls Dam Hydraulic Ram – Refurbishment.

II. Planned Works

R & E Jobs scheduled to occur in February 2009

- Safety Screens have been designed. Procurement of screens will follow pending on completion of tender. At procurement stage.
- Meters are in the process of being ordered and depending on delivery times, construction program will be organised. A minimum 8 week lead time is expected for delivery of meters. At procurement stage.
- Metal items for Clare A Pump Station refurbishment (Pumps 3 & 4) are being fabricated and expected to be completed early in the New Year. Awaiting completion of fabricated items.
- Locations for fencing/signage policy project have been risk assessed and options for procurement are being investigated. Landholders contact list in development; letters to be drafted and sent.
- Millaroo PSTNA flow meters replacement project (initiation and detail design is progressing). Status unchanged.
- Clare PSTNA flow meter replacement project (initiation and detail design is progressing). Status unchanged.
- Refurbishment of Radial Gate Hydraulic System at BFD – Status unchanged due to delay from supplier.
- Upgrade of radio components in the SCADA System is ongoing; at procurement stage.
- Refurbish Pump 4 (pump and motor) at Millaroo A Pump Station – pump to be removed and overhauled in February 2009 (dependent upon weather and river conditions).



SCHEME REPORT – 28 JANUARY 2009

3. Operations and Shutdowns

I. Shutdowns

Current Planned Shutdowns

Type	Area	Location	Commencement Date	Completion Date	Operation	Status
Planned Shut Down	Haughton	H15 REG 94 to end	17/01/2009	24/01/2009	Acrolein Injection control of aquatic weeds	Completed
Planned Shut Down	Haughton	H6 Reg 110 to end	17/01/2009	24/01/2009	Acrolein Injection control of aquatic weeds	Too wet to complete
Planned Shut Down	Millaroo	Channel 2 Reg 104	10/01/2009	17/01/2009	Acrolein Injection control of aquatic weeds	Completed
Planned Shut Down	Barratta	BMC REG 34 to end	10/01/2009	17/01/2009	Acrolein Injection control of aquatic weeds	Completed
Planned Shut Down	Dalbeg	DA CH 1	15/12/2008	22/12/2008	Acrolein Injection control of aquatic weeds	Completed
Planned Shut Down	Haughton	H6 Reg 110 to end	13/12/2008	20/12/2008	Acrolein Injection control of aquatic weeds	Completed
Planned Shut Down	Haughton	H7 Reg 113 to end	13/12/2008	20/12/2008	Acrolein Injection control of aquatic weeds	Completed
Planned Shut Down	Haughton	HMC REG 15 to end	8/12/2008	15/12/2008	Acrolein Injection control of aquatic weeds	Completed
Interruption to Supply	Clare	Clare A Pump Station	8/12/2008	10/12/2008	Channel Scraping	Completed
Planned Shut Down	Millaroo	Millaroo A Ch 13	6/12/2008	13/12/2008	Acrolein Injection control of aquatic weeds	Completed
Planned Shut Down	Haughton	H10 OFFTAKE to end	6/12/2008	13/12/2008	Acrolein Injection control of aquatic weeds	Completed
Planned Shut Down	Barratta	Regulator 71 to end	6/12/2008	13/12/2008	Acrolein Injection control of aquatic weeds	Completed
Planned Shut Down	Haughton	H13 Reg 97	3/12/2008	6/12/2008	Acrolein Injection control of aquatic weeds	Completed
Planned Shut Down	Haughton	H8 Channel	3/12/2008	6/12/2008	Acrolein Injection control of aquatic weeds	Completed
Interruption to Supply	Millaroo	Millaroo A Pump Station	1/12/2008	5/12/2008	Channel Scraping	Completed
Rain Event	Clare	Clare B Pump Station	19/01/2009		Concrete repairs to channel	Completed
Rain Event	Haughton	H19 REG 86 to end	13/01/2009		Acrolein injection weed control	Completed
Rain Event	Haughton	H13 REG 97 to end	13/01/2009		Acrolein injection weed control	Completed
Rain Event	Haughton	H6 Reg 110 to end	28/01/2009		Acrolein injection weed control	Completed
Rain Event	Dalbeg	Dalbeg A Pump Station	13/01/2009		Channel Scraping	Completed
Rain Event	Dalbeg	Dalbeg B Pump Station	13/01/2009		Channel Scraping	Completed



SCHEME REPORT – 28 JANUARY 2009

Future Planned Shutdowns

- Currently reviewing shutdowns for February 2009 re: Acrolein Injections.
- R & E Program - Meter Outlet replacements.
- Flood damage repair work is nearing conclusion; anticipated completion date being March 2009.

II. Rain Event Maintenance

- Acrolein injection planned for H16 on Monday, 2 February 2009.
- Repairs to slide gate rubbers in Clare, Millaroo and Dalbeg.
- Operational staff currently undertaking weed control of SunWater's infrastructure.

III. Weed Control

- Schedule of Acrolein injections are listed above.
- The turbidity of the river water is higher than in December 2008, resulting in less algae/weed growth. Copper Sulphate injections ceased.
- Mowing/slashing of channel banks and drains will commence in mid-February 2009 (weather permitting).